

# Server Update

For eRAD RIS  
Version 2.0  
Build 44.3  
Update 44.3.1

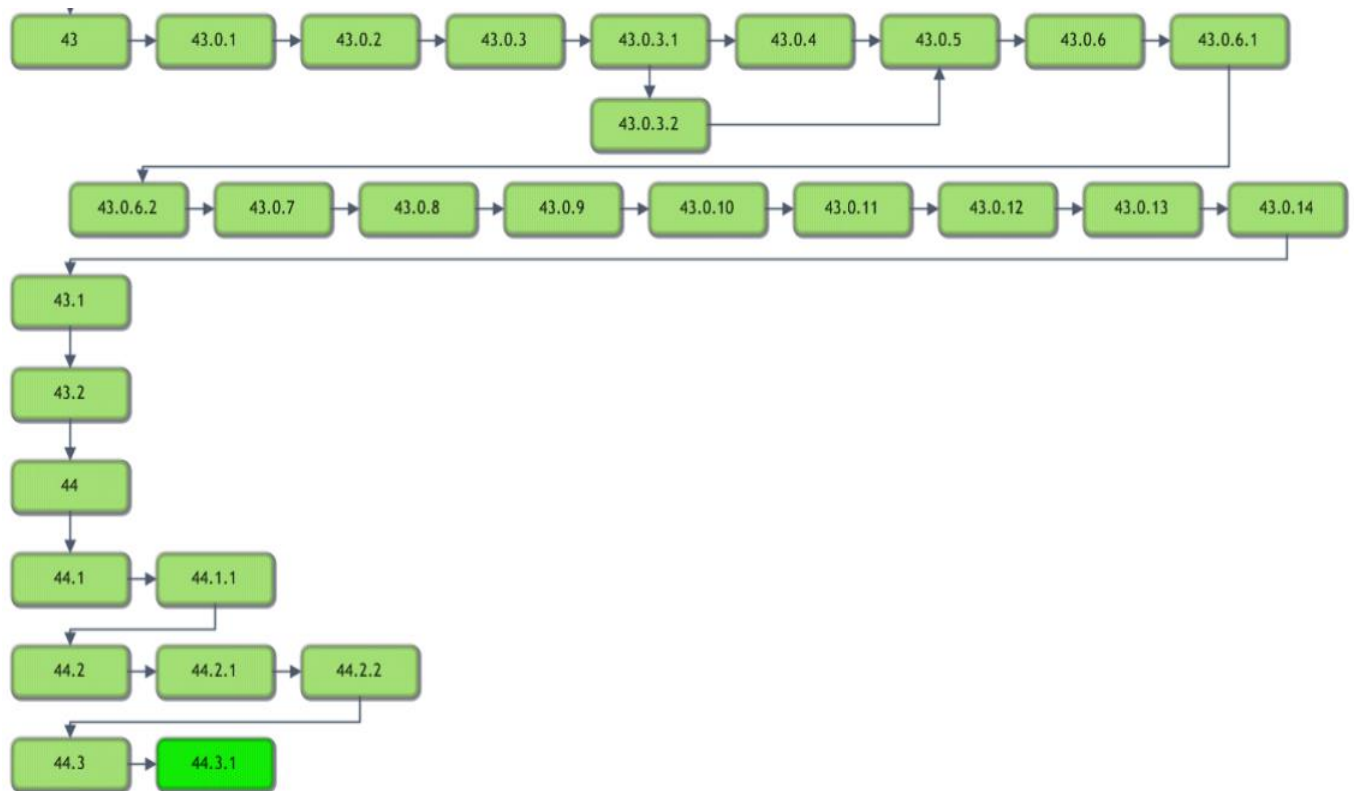
## **Table of Contents**

1. Resolved Items .....	3
2. Code Stream .....	4
3. Package Contents .....	5
4. Intended Audience .....	7
5. Who is affected .....	7
6. eRAD RIS Release Version Numbers .....	8
7. Installing .....	9
Client/GUI .....	9
Web Service .....	10

### **1. Resolved Items**

Redmine #	Subject	Priority
10019	Error on Image Request worklist using custom "My Views" that have been grouped	Urgent
9726	Error when rescheduling a cancelled order.	Urgent
10303	Send to Patient can display incorrect information in GUI	High
10301	collection was modified error on scheduling / save as order	Normal
10020	Insurance Eligibility - Usual&Customary error is preventing View Edit from saving	Normal

### 2. Code Stream



#### Legend:

Light Green = Released software

Gray = Will not be released

Bright Green = Current Release

### **3. Package Contents**

Files included for this server update:

1. **GUI\_ZIP\_Updates** contains 1 file:

rRIS\_1.3.44.3.1.28535

2. **rRISService** folder contains:

- |   |  |
|---|--|
| 2.1. ABCpdf.dll   | 2.43. Radar.Common.WebClient.dll         |
| 2.2. ABCpdf9-32.dll                                     | 2.44. Radar.Common.WebClient.pdb         |
| 2.3. ABCpdf9-64.dll                                     | 2.45. Radar.DirectMessaging.Client.dll   |
| 2.4. Antlr3.Runtime.dll                                 | 2.46. Radar.DirectMessaging.Client.pdb   |
| 2.5. CDSJobManager.dll                                  | 2.47. Radar.DirectMessaging.Model.dll    |
| 2.6. CDSJobManager.pdb                                  | 2.48. Radar.DirectMessaging.Model.pdb    |
| 2.7. CdsLib.dll   | 2.49. rRISServices.exe                   |
| 2.8. CdsLib.xml   | 2.50. rRISServices.pdb                   |
| 2.9. CdsLib.XmlSerializers.dll                          | 2.51. rRISServicesx64.exe                |
| 2.10. CommonLib.dll                                     | 2.52. ScheduledTaskManager.dll           |
| 2.11. CommonLib.pdb                                     | 2.53. ScheduledTaskManager.pdb           |
| 2.12. DDEngine.dll                                      | 2.54. ServicesConfigWizard.exe           |
| 2.13. DDEngine.pdb                                      | 2.55. ServicesConfigWizard.pdb           |
| 2.14. DiffPlex.dll                                      | 2.56. SignatureApprovalService.exe       |
| 2.15. Interop.FAXCOMEXLib.dll                           | 2.57. SignatureApprovalService.pdb       |
| 2.16. Microsoft.Practices.EnterpriseLibrary.Caching.dll | 2.58. System.Net.Http.dll                |
| 2.17. Microsoft.Practices.EnterpriseLibrary.Caching.pdb | 2.59. System.Net.Http.Formatting.dll     |
| 2.18. Microsoft.Practices.EnterpriseLibrary.Common.dll  | 2.60. System.Web.Http.dll                |
| 2.19. Microsoft.Practices.EnterpriseLibrary.Common.pdb  | 2.61. System.Web.Http.SelfHost.dll       |
| 2.20. Microsoft.Practices.EnterpriseLibrary.Logging.dll | 2.62. System.Web.Http.SelfHost.xml       |
| 2.21. Microsoft.Practices.EnterpriseLibrary.Logging.pdb | 2.63. System.Web.Http.WebHost.dll        |
| 2.22. Microsoft.Practices.ServiceLocation.dll           | 2.64. System.Web.Http.WebHost.xml        |
| 2.23. Microsoft.Practices.ServiceLocation.pdb           | 2.65. System.Web.Http.xml                |
| 2.24. Microsoft.Practices.Unity.dll                     | 2.66. System.Web.Mvc.dll                 |
| 2.25. Microsoft.Practices.Unity.Interception.dll        | 2.67. System.Web.Mvc.xml                 |
| 2.26. Microsoft.Practices.Unity.Interception.pdb        | 2.68. System.Web.Optimization.dll        |
| 2.27. Microsoft.Practices.Unity.pdb                     | 2.69. System.Web.Razor.dll               |
| 2.28. Microsoft.ReportViewer.Common.dll                 | 2.70. System.Web.Razor.xml               |
| 2.29. Microsoft.ReportViewer.WinForms.dll               | 2.71. System.Web.WebPages.Deployment.dll |
| 2.30. Microsoft.ReportViewer.WinForms.xml               | 2.72. System.Web.WebPages.Deployment.xml |
| 2.31. Newtonsoft.Json.dll                               | 2.73. System.Web.WebPages.dll            |
| 2.32. Newtonsoft.Json.xml                               | 2.74. System.Web.WebPages.Razor.dll      |
| 2.33. NLog.dll  | 2.75. System.Web.WebPages.Razor.xml      |
| 2.34. O2S.Components.PDFRender4NET.dll                  | 2.76. System.Web.WebPages.xml            |
| 2.35. PdfSharp.dll                                      | 2.77. Tourreau.Gilles.FaxDotNet.dll      |
| 2.36. PDFToImages.exe                                   | 2.78. Tourreau.Gilles.FaxDotNet.pdb      |
| 2.37. Radar.Api.Client.dll                              | 2.79. Tourreau.Gilles.FaxDotNet.xml      |
| 2.38. Radar.Api.Client.pdb                              | 2.80. WCFService.dll                     |
| 2.39. Radar.Api.Model.dll                               | 2.81. WCFService.pdb                     |
| 2.40. Radar.Api.Model.pdb                               | 2.82. WCFServiceTests.dll                |
| 2.41. Radar.Common.dll                                  | 2.83. WCFServiceTests.pdb                |
| 2.42. Radar.Common.pdb                                  | 2.84. WebApi.dll                         |

## **eRAD RIS Server Update**

2.85. WebApi.pdb  
2.86. WebGrease.dll

2.87. Wedge.exe  
2.88. Wedge.pdb

### 2.1.1 **XSL** folder contains:

#### 2.1.1.1. **Stylesheets** folder contains:

- A. CDAToHTMLCompleteReport.xslt
- B. CDAToHTMLCompleteReportDark.xslt
- C. CDAToHTMLImpressionSection.xslt
- D. CDAToRIS.xslt
- E. CDAToTxt.xslt
- F. DocumentModelReport.xslt
- G. DocumentModelReportAsXml.xslt
- H. **CDA** folder contains:
  - i. C-CDA.xsl
  - ii. eRadStylesheet.xsl
  - iii. generalTemplates.xsl
  - iv. header.xsl
  - v. QRDA.xsl
  - vi. QrdaLevel3\_Cypress2.4.0.xsl
  - vii. QrdaLevel3\_ViewHtml.xsl
  - viii. sectionAdministeredMedications.xsl
  - ix. sectionAllergies.xsl
  - x. sectionEncounters.xsl
  - xi. sectionFindings.xsl
  - xii. sectionFuncCogStatus.xsl
  - xiii. sectionImmunizations.xsl
  - xiv. sectionInstructions.xsl
  - xv. sectionMedications.xsl
  - xvi. sectionPlanOfCare.xsl
  - xvii. sectionProblemList.xsl
  - xviii. sectionProcedures.xsl
  - xix. sectionQRDAMeasures.xsl
  - xx. sectionQRDAPatientData.xsl
  - xxi. sectionQRDAREporting.xsl
  - xxii. sectionReasonForVisit.xsl
  - xxiii. sectionResults.xsl
  - xxiv. sectionSocialHistory.xsl
  - xxv. sectionVitalSigns.xsl

### 2.1.2 **Deploy** folder contains 4 files:

- 2.1.2.1. applicationsettings.config
- 2.1.2.2. releaseVersion-connectionstrings.config
- 2.1.2.3. rRISServices.exe.config
- 2.1.2.4. rRISServicesx64.exe.config
- 2.1.2.5. services.config

### **4. Intended Audience**

This document is created by the RIS Development team for the RadNet/eRAD RIS Implementation teams.

### **5. Who is affected**

Build 44.2 – 44.3 installs. This server update must be applied to 44.3

## 6. eRAD RIS Release Version Numbers

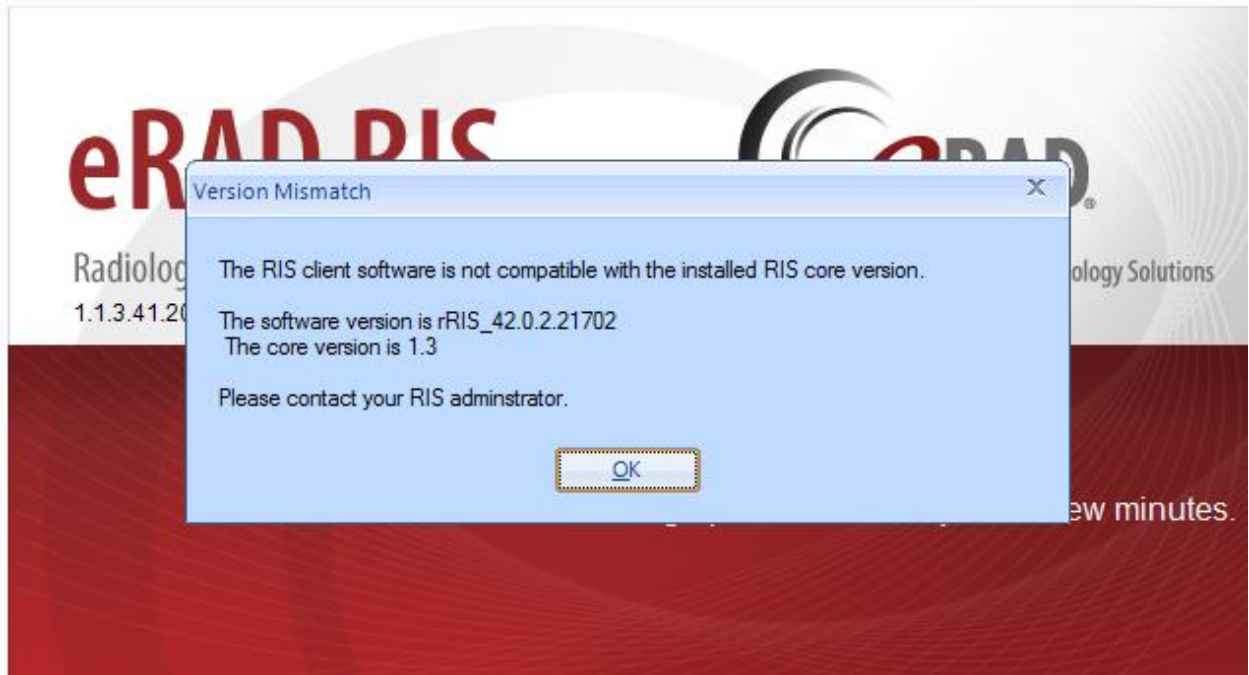
Build	Patch	UI Version	Core Version	WS Version	DB Version	Notes
43	-	2.43.0.0.23715(3GB)	2.43.0.0.23171	2.43.0.0.23715	2.43.0.0.23743	Full Version Release
43	1	2.43.0.1.23798(3GB)	2.43.0.0.23171	2.43.0.1.23798	2.43.0.1.23770	GUI.zip, Web Service, DB updates
43	2	2.43.0.2.24017(3GB)	2.43.0.0.23171	2.43.0.2.24017	2.43.0.2.24023	GUI.zip, Web Service, DB updates and Management Report Deployment
43	3	2.43.0.3.24298(3GB)	2.43.0.0.23171	2.43.0.3.24298	2.43.0.3.24283	GUI.zip, Web Service, DB updates and Management Report Deployment
43	3.1	2.43.0.3.24450(3GB)	2.43.0.0.23171	2.43.0.3.24298	2.43.0.3.24421	GUI.zip, and DB updates
43	3.2	2.43.0.3.24450(3GB)	2.43.0.0.23171	2.43.0.3.24298	2.43.0.3.24421a	DB updates
43	4	2.43.0.4.24447(3GB)	2.43.0.0.23171	2.43.0.4.24447	2.43.0.4.24442	GUI.zip, Web Service, DB updates and Management Report Deployment
43	5	2.43.0.4.24632(3GB)	2.43.0.0.23171	2.43.0.4.24632	2.43.0.4.24560	GUI.zip, Web Service and DB updates
43	6	2.43.0.4.24(3GB)	2.43.0.0.23171	2.43.0.4.24	2.43.0.4.24	GUI.zip, Web Service and DB updates
43	6.1	2.43.0.6.24937(3GB)	2.43.0.0.23171	2.43.0.6.24937	2.43.0.6.24914	GUI.zip, Web Service
43	6.2	2.43.0.6.24970(3GB)	2.43.0.0.23171	2.43.0.6.24970	2.43.0.6.24914	GUI.zip, Web Service
43	7	2.43.0.7.25258(3GB)	2.43.0.0.23171	2.43.0.7.25258	2.43.0.7.25226	GUI.zip, Web Service, DB updates and Management Report Deployment
43	8	2.43.0.8.25440(3GB)	2.43.0.0.23171	2.43.0.8.25440	2.43.0.8.25425	GUI.zip, Web Service, DB updates and Management Report Deployment
43	9	2.43.0.9.25477(3GB)	2.43.0.0.23171	2.43.0.9.25477	2.43.0.8.25425	GUI.zip and Web Service
43	10	2.43.0.9.25477(3GB)	2.43.0.0.23171	2.43.0.10.25477	2.43.0.8.25425	Web Service
43	11	2.43.0.11.25512(3GB)	2.43.0.0.23171	2.43.0.11.25512	2.43.0.8.25425	GUI.zip and Web Service
43	12	2.43.0.12.25554(3GB)	2.43.0.0.23171	2.43.0.12.25554	2.43.0.12.25536	GUI.zip Web Service and DB Updates
43	13	2.43.0.12.25610(3GB)	2.43.0.0.23171	2.43.0.12.25610	2.43.0.12.25536	GUI.zip and Web Service
43	14	2.43.0.14.25644(3GB)	2.43.0.0.23171	2.43.0.13.25610	2.43.0.12.25536	GUI.zip
43.1	-	2.43.1.0.25850(3GB)	2.43.0.0.23171	2.43.1.0.25850	2.43.1.0.25771	GUI.zip Web Service and DB Updates
43.2	-	2.43.2.0.26864(3GB)	2.43.0.0.23171	2.43.2.0.26864	2.43.1.0.25771	GUI.zip and Web Service
44	-	2.44.0.0.26570(3GB)	2.44.0.0.26405	2.44.0.0.26570	2.44.0.0.26475	Full Version Release
44.1	-	2.44.0.0.26984(3GB)	2.44.0.0.26405	2.44.0.0.26984	2.44.0.0.26906	Gui.zip, Web Service, and DB
44.1	1	2.44.1.1.27093(3GB)	2.44.0.0.26405	2.44.1.0.26984	2.44.1.0.26906	Gui.zip
44.2		2.44.2.0.27410(3GB)	2.44.0.0.26405	2.44.2.0.27410	2.44.2.0.27365	Gui.zip, Web Service, and DB
44.2	1	2.44.2.1.27959(3GB)	2.44.0.0.26405	2.44.2.1.27959	2.44.2.1.27909	Gui.zip, Web Service, and DB
44.2	2	2.44.2.1.27959(3GB)	2.44.0.0.26405	2.44.2.2.28094	2.44.2.1.27909	Web Service
44.3	-	2.44.3.0.28292	2.44.0.0.26405	2.44.3.0.28277	2.44.3.0.28138	Gui.zip, Web Service, and DB
44.3	1	2.44.3.1.28535(3GB)	2.44.0.0.26405	2.44.3.1.28535	2.44.3.0.28138	Gui.zip and Web Service



## 7. Installing

### Client/GUI

- 1) Copy and replace the current rRIS...zip file with the rRIS\_1.3.44.3.1.28535.zip file provided with this release.  
Be sure to make a backup of the ris.exe.config file contained within the current .zip folder.



If you receive the Version Mismatch error above the GUI.zip will need to be renamed to add 1.3. to it. The GUI.zip file name change is from rRIS\_44.3.1.28535→ rRIS\_1.3.44.3.1.28535

NOTE: the GUI.zip included with this release has already been renamed to include 1.3.

This is required for installs that have not reached build 42. Because the software installed on your local workstation is a pre-42 build it detects a version mismatch in the software naming and won't allow the newest build to be launched (it is looking for 1.3. in the name). Once the workstation(s) have reached a build of 42 we will no longer need to add "1.3." to the GUI.zip name. Also note that a core install will not resolve this issue below.

**NOTE:** If your upgrade is coming from 40.016.1 or prior a core install will be required. Versions (builds) of 40.017 and greater do not require a core install as long as you are at least at 40.017 (Core Version 1.3.40.18756)

## **eRAD RIS Server Update**

### **Web Service**

1. The web service upgrade consists of replacing the files in the RIS Web Service directory with the files supplied in the rRISService folder with this build. Always create a backup of the files being replaced. This upgrade includes 88 files in the rRISService folder and 2 sub folders. Of those folders, 1 is a folder titled “XSL” that contains a sub folder and files within the subfolder. Another folder is titled “**deploy**” that contains the new .config files that will be deployed with the user of the file called “ServicesConfigWizard.exe” (see instructions below).

### **Services Configuration Wizard**

With the release of 42 to decrease the chance of losing configuration setting and missing new configuration options, we will no longer include the configuration files in the release in the main set of files, but they will now exist in a “deploy” folder, which will contain the three site configurable config files; applicationsettings, connectionstrings, services as well as a copy of the rRISServices.exe configuration file. The contents of this folder should not be required to be touched.

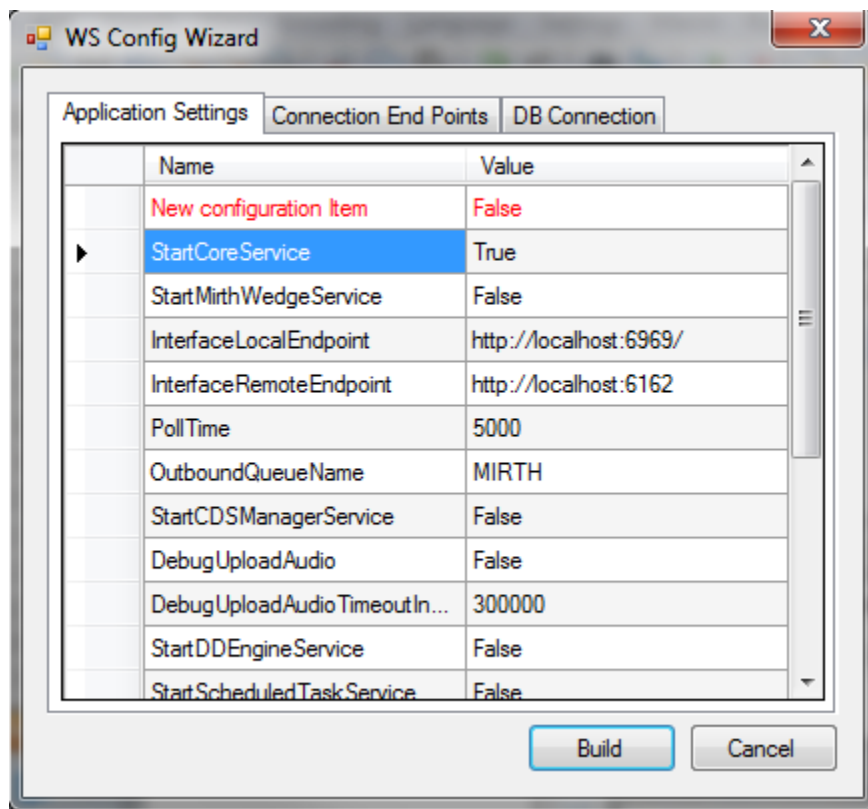
On the install of a new service, all files will be copied to the appropriate locations on the server (no configurations will be over written). If instructed or to confirm no new configurations have been added the user can run the new application “ServicesConfigWizard.exe”

This application will read the existing configuration file(s) (if files exist), and compare to the provided new configuration files then will display three tabs, for each configuration file:

**Application Settings:** all existing configuration value will be displayed, if there are any new configuration entries they will be displayed in red.

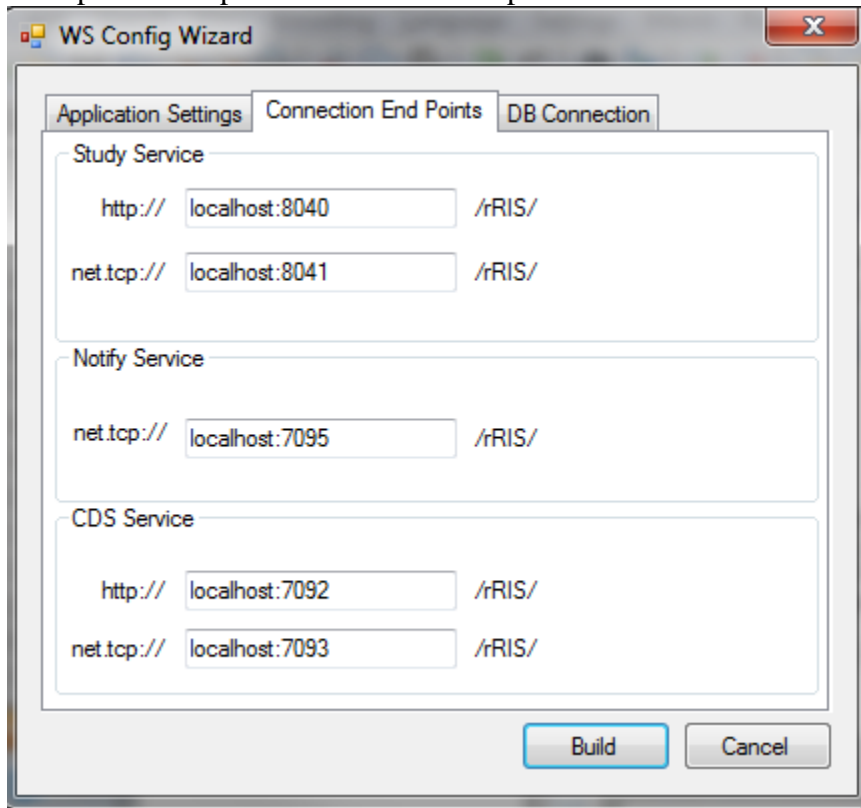
**NOTE:** the rRISServices.exe.config file is also included in the deploy folder. If this file has changes it **will not** update your current file in the Web Service directory. Any changes to this file will require a manual update of the rRISServices.exe.config and rRISServicesx64.exe.config files.

## eRAD RIS Server Update



## eRAD RIS Server Update

**Connection End Points:** will display the existing configuration, if the value is left blank then that entry will not be created, in the case of “Study Service” or “CDS Service” if both http and net.tcp were not provided then that endpoint will not be created at all.

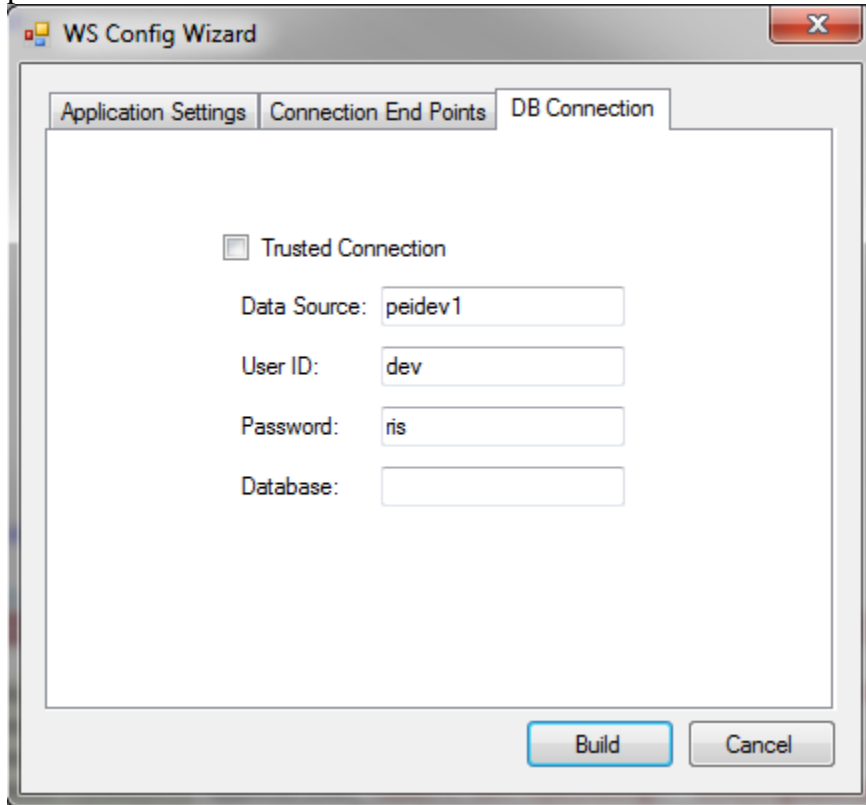


The screenshot shows the 'WS Config Wizard' dialog box with the 'Connection End Points' tab selected. The dialog has three tabs: 'Application Settings', 'Connection End Points', and 'DB Connection'. The 'Connection End Points' tab contains three sections: 'Study Service', 'Notify Service', and 'CDS Service'. Each section has two rows of input fields for 'http://' and 'net.tcp://' endpoints, followed by a '/rRIS/' label. The 'Study Service' section has 'localhost:8040' and 'localhost:8041'. The 'Notify Service' section has 'localhost:7095'. The 'CDS Service' section has 'localhost:7092' and 'localhost:7093'. At the bottom right are 'Build' and 'Cancel' buttons.

Service	Protocol	Host:Port	Path
Study Service	http://	localhost:8040	/rRIS/
	net.tcp://	localhost:8041	/rRIS/
Notify Service	net.tcp://	localhost:7095	/rRIS/
	http://		
CDS Service	http://	localhost:7092	/rRIS/
	net.tcp://	localhost:7093	/rRIS/

## **eRAD RIS Server Update**

**DB Connection:** will display the existing configuration, if the Connection is to be used as a trusted connection, then the user ID and password will become disabled and will not be used, and will rely on the provided database value, When not using the trusted connection, The Database value is not needed but can be used to force a specific database connection as long as the provided user has access to that database.



It is always good practice to do a compare of the .config files.

- 1) Stop each service listed below. Copy the files from the RIS Service Updates folder to the directory for each rRISService.

*rRISService directories include:*

- a) *rRISService*
- b) *CDS rRISService*
- c) *Wedge rRISService*
- d) *DDE rRISService*

**Restart each service.**